

## CHAMBER MUSIC IN LITTLE VENICE

PRESENTS:

### ARTISTS FROM AROUND THE BALTIC SEA

Kristine Balanas - violin

Danae Taamal - violin

Karin Norlén - viola

Margarita Balanas - cello

Maksim Štšura - piano

Krista Speakman-Brown – ceramics

#### DATE:

Thursday, 1<sup>st</sup> December 2011, 7.30pm

Doors open at 6.30pm for exhibition preview

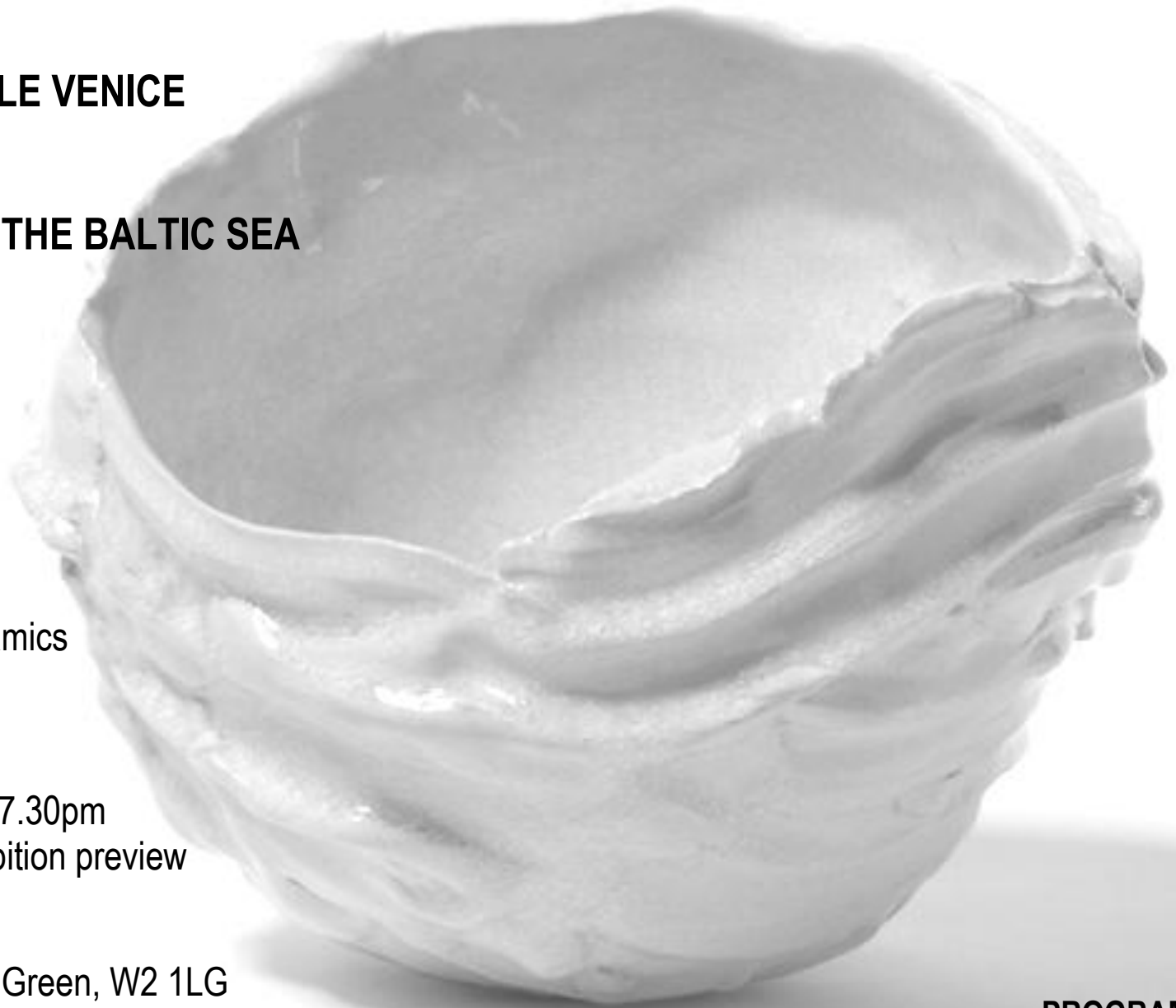
#### VENUE:

St. Mary's Church, Paddington Green, W2 1LG

#### TICKETS ON THE DOOR:

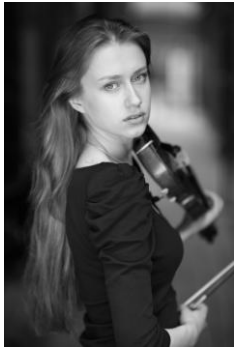
£10 (£8 concessions – children up to 12 free)

Refreshments will be served



#### PROGRAMME:

Handel-Halvorsen Passacaglia  
Shostakovich Piano Trio No.2, Op. 67  
Dvořák Piano Quintet No.2, Op. 81



Kristine Balanas was born in Latvia and started to play the violin at the age of seven. Since the age of twelve, she has won prizes at numerous international violin competitions in Europe. Regularly performing all over the UK and Europe, Kristine continues to captivate audiences with the intensity of her tone and the sincerity of her interpretations.



Margarita Balanas was born in Riga, Latvia in 1993. She started playing the cello at the age of six. Margarita now studies at the Purcell School of Music with Alexander Boyarsky. She has won many international competitions and has recently performed Shostakovich's cello concerto and Dvorak's cello concert with orchestras. Margarita's performances never cease to combine her strong musical character and mature sound.



Karin Norlén was born in Sweden but also grew up in the Middle East and Africa. She currently works regularly as a violist in orchestras such as the Royal Philharmonic Orchestra and London Philharmonic Orchestra. She has given concerts in Europe and the USA, and her playing has been broadcast on Swedish Radio and Israeli Television. She paints and draws in her spare time and is Artistic Director of *Chamber Music in Little Venice*.



Born in Tallinn in 1986, Danae Taamal studied at the Estonian Academy of Music and is currently completing her postgraduate studies at the Guildhall School of Music and Drama. Already a prize-winner at several national competitions in Estonia, Danae has performed with the European Union Youth Orchestra and numerous Estonian orchestras, and has given solo concerts around Estonia and the UK.



Estonian Pianist Maksim Štšura was born in 1988 and started playing the piano at the age of six. He is currently studying at the Royal College of Music with Gordon Fergus-Thompson. A prize-winner at several international competitions, he is already in great demand as a solo pianist and chamber musician, performing with orchestras including the Estonian National Symphony Orchestra.



Krista Speakman-Brown graduated from Loughborough University with a BA(Hons) degree in ceramics. She continues to create her own work at Maze Hill Pottery in Greenwich, exhibiting her work there as well as at other shows in Hatfield, Leicestershire, and London. Through her work, Krista explores the territory between functional and sculptural ceramics - mixing the characteristics of both to create a range of objects highly tactile in quality.



Please see map for location of St. Mary's Church  
Nearest tube station is Edgware Road (Bakerloo branch)